

2010 Workholder Catalog



K&S Manual Wire Bonders division

2010 Kulicke & Soffa Industries Inc. Specifications may change without notice.

Introduction

We are proud to introduce you to our new online Workholder catalog for Manual Wire Bonder applications.

This catalog will offer you our wide range of Workholders for standard and customized applications. Any of the types presented here can be applicable for any manual bonder available at customer site. We will be adding more workholders as they become available.

With over 30 years of experience, K&S Manual Bonders division, will continue to design and develop advanced Workholder types, that will fit your specific application challenges and needs.

For any additional information and special requirements pls. contact your local representative listed at www.kns.com

P/N 04142-0X01-000-01

**Adjustable Height Stationary Heated
Workholder for substrates and flat packages
up to 2" x 2"**



P/N 04142-0X26-000-01

**Adjustable Height Stationary Heated Workholder
with vacuum and mechanical hold down for
packages and substrates up to 4" X 4"**



P/N 04142-0X04-000-01

**Adjustable Height Stationary Heated
Workholder with 0.1" slots 0.4" deep for
packages up to 2" x 2"**



P/N 04142-0X11-000-01

**Adjustable Height Stationary Heated Workholder
with vacuum and mechanical hold sown for
packages and substrates up to 2" X 2"**



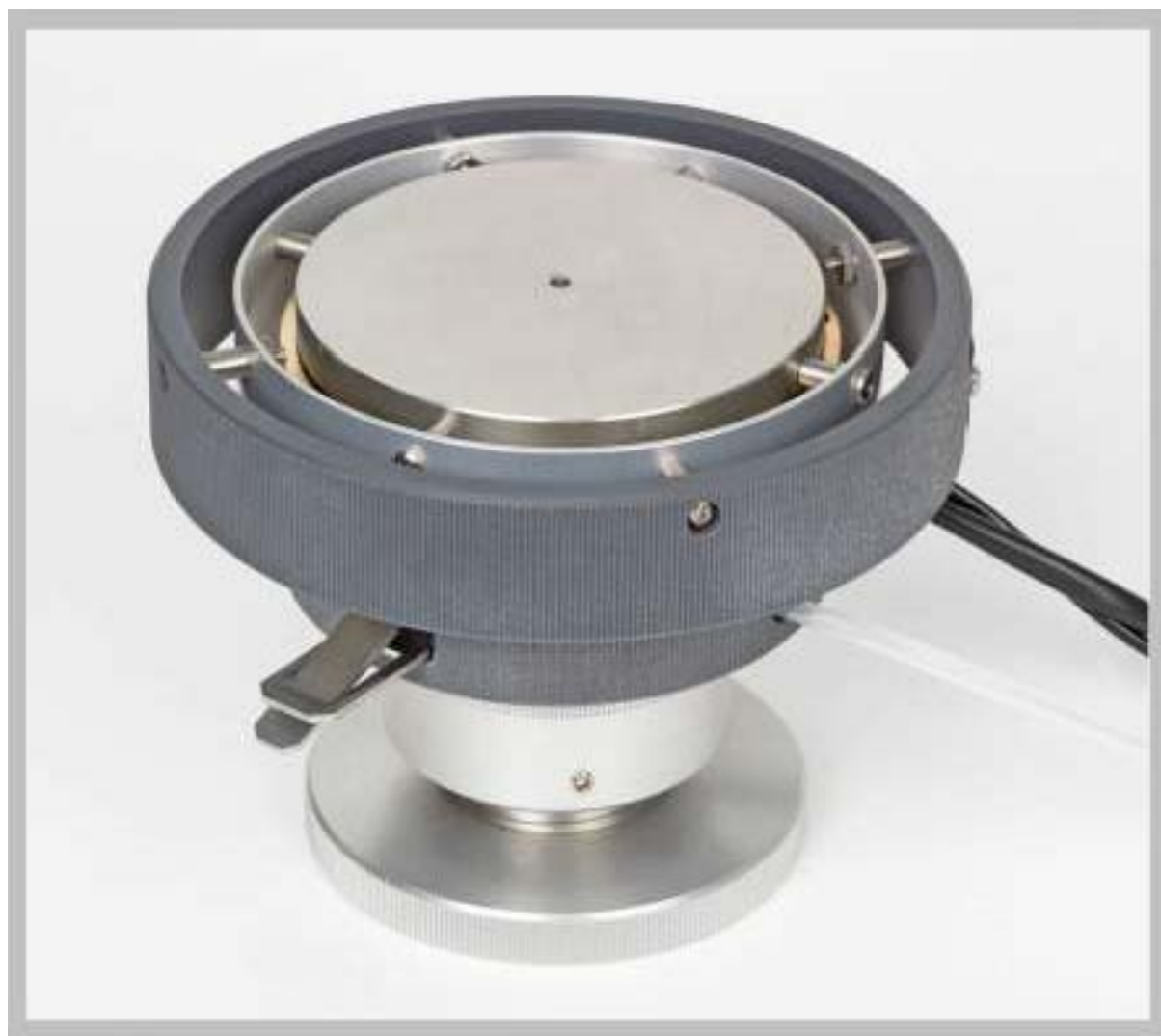
P/N 04135-0X06-000-01

**Adjustable Height Rotary Universal Workholder
with .1" centerline slots, .35" deep**

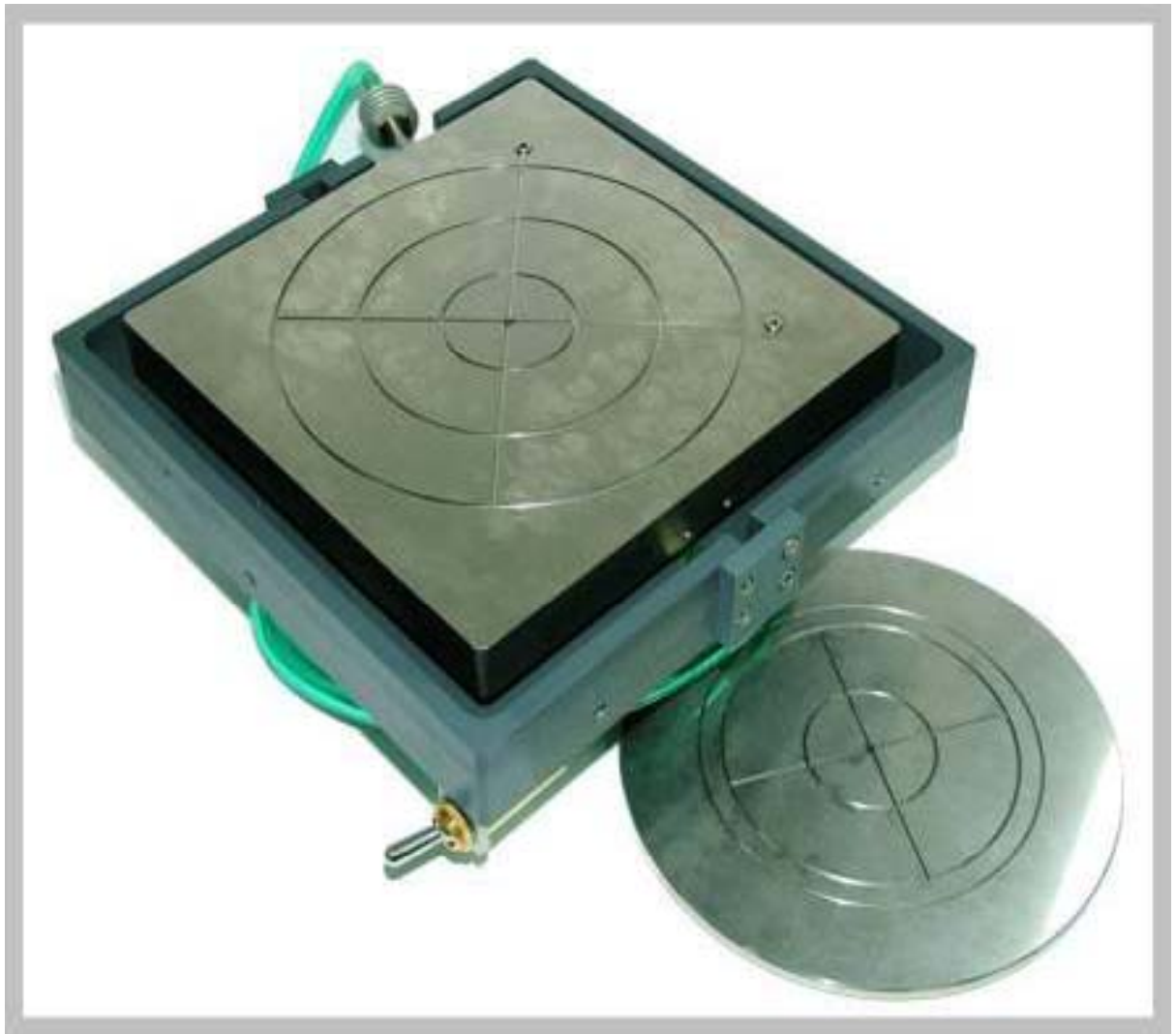


P/N 04135-0X05-000-01

**Adjustable Height Rotary Heated Workholder
with vacuum hold down for packages and
substrates up to 2.5" x 2.5"**



Height Adjustable Workholder for 4" and 8" wafers with vacuum



**Height Adjustable Workholder for TO vertical
& Horizontal wire bonding**



P/N 04142-0X17-000-01

**Adjustable height stationary heated
Workholder for substrates and flat packages
up to 4" x 4"**



P/N 04142-0X15-000-01

**Adjustable height stationary heated
Workholder for to-8(0.5") dual station**



**Adjustable height stationary heated
Workholder for to-5 dual station**



P/N 04142-0X09-000-01

**Adjustable height stationary heated
Workholder for to-3 single station**



P/N 04142-0X03-000-01

**Adjustable height stationary heated
Workholder for 14-40 leads 0.300" and 0.600"
centerline & horizontal wire bonding**



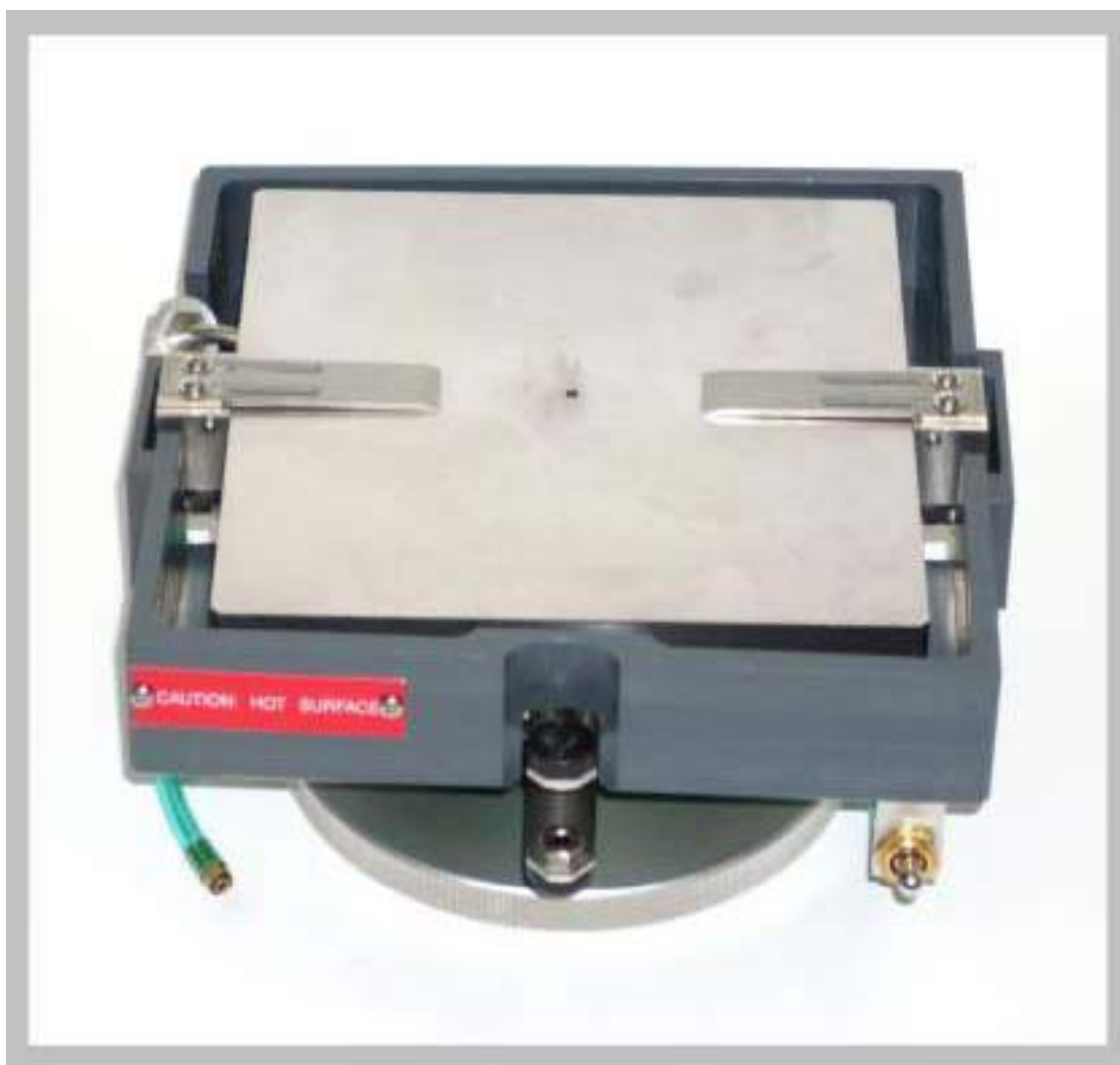
P/N 04135-0X01-000-01

**Adjustable height rotary heated Workholder
for substrates and flat packages up to 2.5" x
2.5"**



P/N 04142-5191-000-01

6" X 6" Workholder For flat packages, 220v



External W.H. heat controller



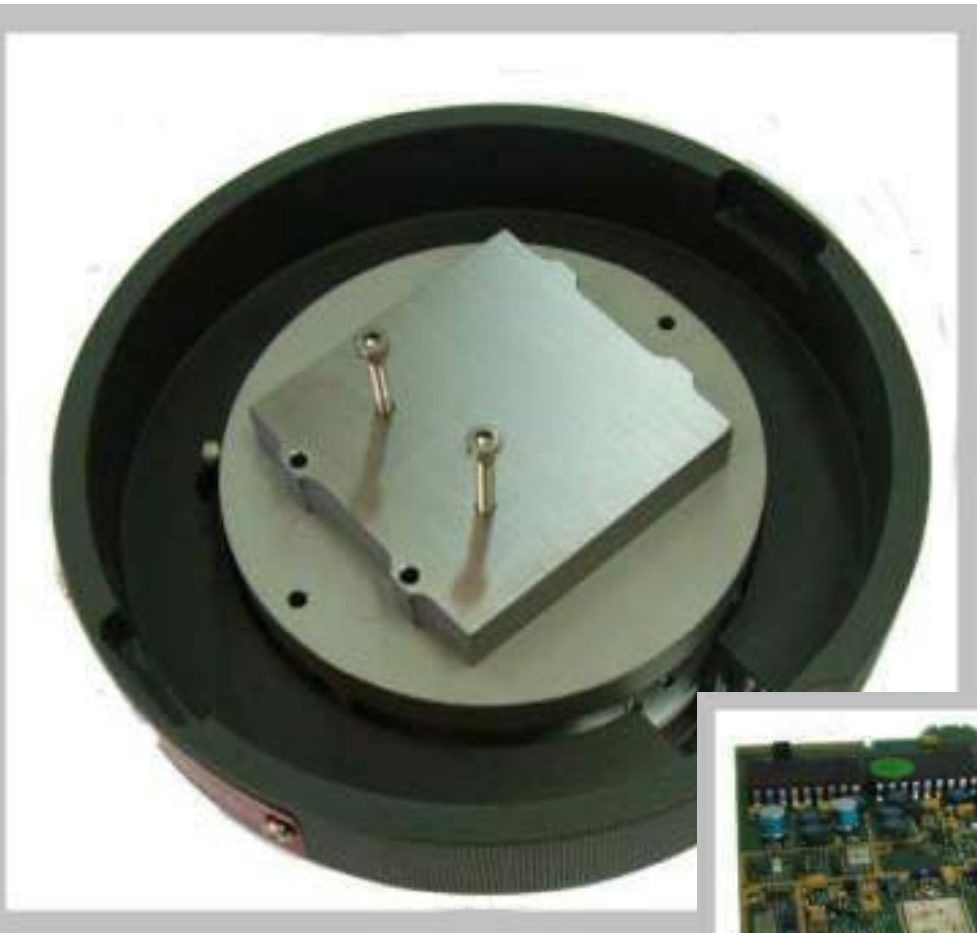
P/N 04135-5037-000-00

**Adjustable Height Rotary Heated Modular Workholder ;
addable inserts designed to specific applications, per
customer' device and production
(Includes propriety standard design)**



P/N 04142-5265-000-00

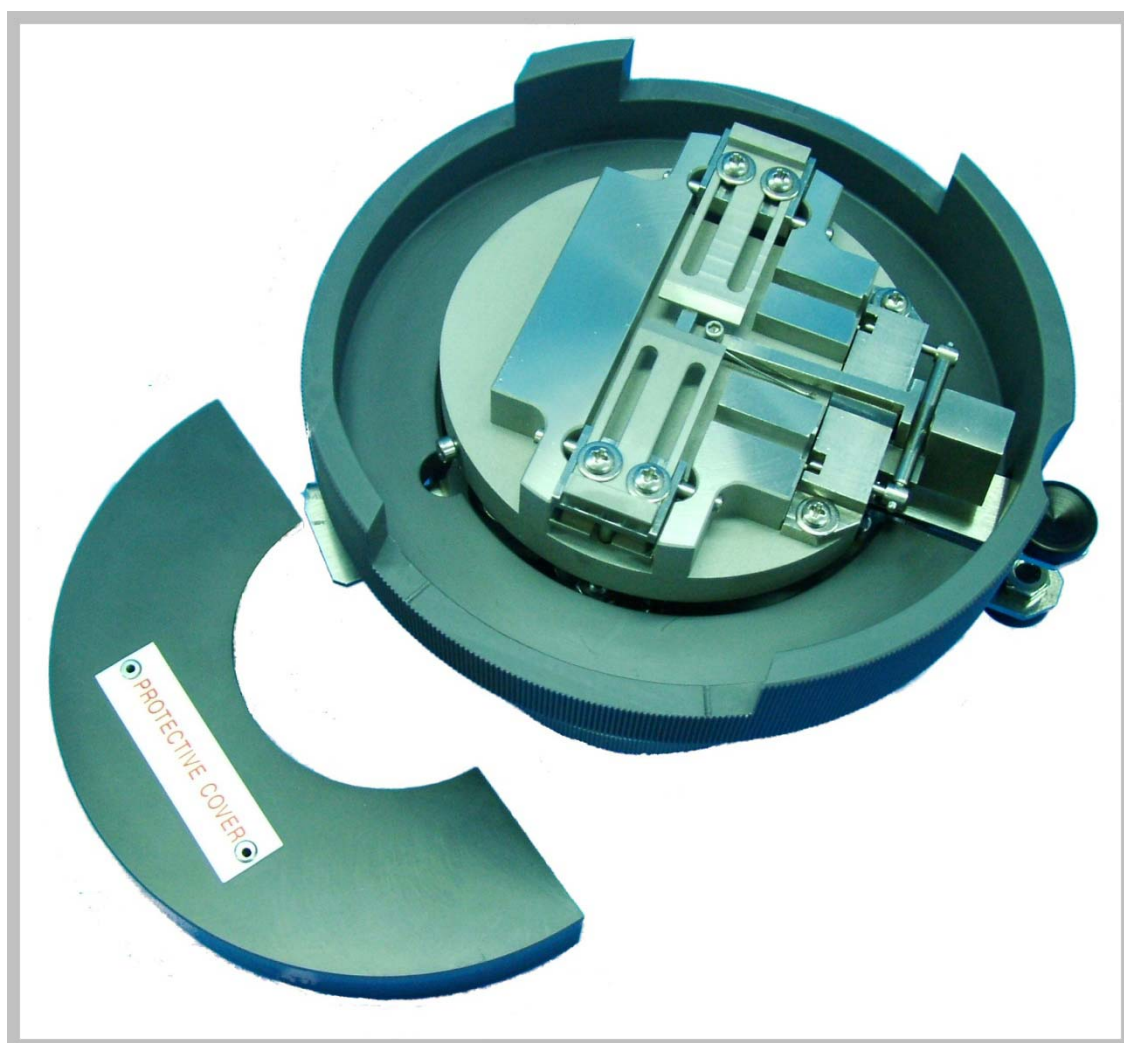
Height Adjustable Workholder for PCB 6x6 220V



**Adjustable height rotary Workholder for
tube sensors**



Horizontal Clamping TO-56 headers

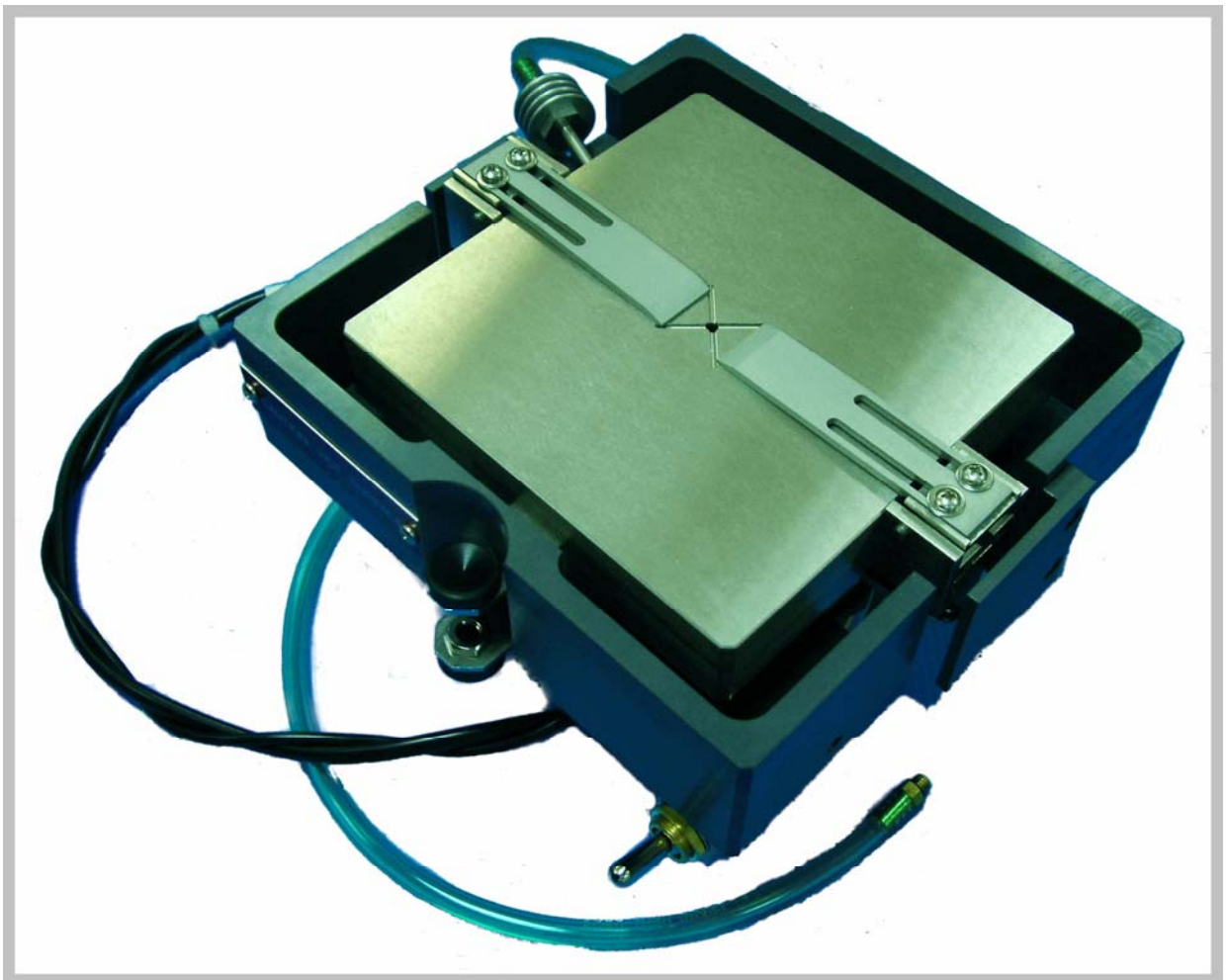


4"x4" vacuum Workholder with cavity



P/N 04142-5222-000-00

**4"x4" adjustable Height heated Workholder
w/vacuum cross for 110v and 36" harness**



P/N 04135-5039-000-00

**Heated rotary Workholder with inserts for
round devices (D 5-19 mm, H 5-25 mm)**

