

Triton RDA

Automatic Wedge Bonder

K&S Triton wedge bonder platform will further advance wedge-bonding capabilities. As the first member of this family, the Triton RDA Ribbon Deep Access Bonder, is designed specifically for ribbon bonding. The Triton RDA combines the industry's fastest cycle speed with the deep access capabilities and a fully automatic material handling system.

BOND HEAD

Z Travel Limit

25.4 mm (1.0")

Theta rotation

380°

Theta Travel Resolution

0.04° / pulse (total of 380° rotation)

Ribbon Size

12.7 µm to 25.4 µm thick x 50.8 µm to 254 µm wide (0.5 x 2.0 - 1 x 10 mil)

Wire Size

Al, Au 18 µm to 76.2 µm (0.7 to 3 mil)

Wire Feed Angle

90° fixed

Bond Force

Programmable (10 to 300g) with 1g resolution

Bond Time

Programmable (1 to 1,000 msec) with 1 msec resolution

Bond Power

Programmable (0 to 3.8 W)

Wire Cycle Speed

2-4 wires per sec depending upon application

Ultrasonic Frequency

120 kHz (nominal)

XY TABLE

Bonding Area

63.5 mm x 58.4 mm (2.5" x 2.3")

Y-Throat Depth

136 mm (5.375")

Resolution

0.1 µm

Bond Placement Accuracy

+/- 3.0 µm at 3 sigma

Bond Placement Repeatability

2.5 µm

J BOAT/MAGAZINE HANDLING

Elevator travel

25 cm (10")

Maximum Magazine Size

300 mm (L) x 118 mm (W) x 178 mm (H)
12" (L) x 3.46" (W) x 10" (H)

J Boat Size

≤109 mm (4.3") Standard J Boat

Pitch Size

Minimum 12mm (0.5")

DIGITAL VISION SYSTEM WITH CCD PROGRESSIVE SCAN CAMERA

Pattern Recognition System

Digital, Gray scale

Image Rotation

± 5° from taught image

Tilt

± 5° maximum

Accuracy (Eyepoint Tolerance)

1/10 pixel (0.5 µm)

LED Illumination

Vertical, High Angle & Oblique

OPTICS

Magnification

2X (4.5 µm / pixel)

Focus range

12.7 mm (0.5") programmable

Field of View

2.9 mm x 2.6 mm (0.114" x 0.085")

ENVIRONMENTAL REQUIREMENTS

Temperature Range

15 - 30°C (59 - 86°F)

Relative Humidity

30 - 70% (non-condensing)

Atmospheric Pressure

540 - 810 mm Hg (21.2 - 31.9" Hg)

UTILITIES

Voltage

100 - 240 VAC (selectable)

Frequency

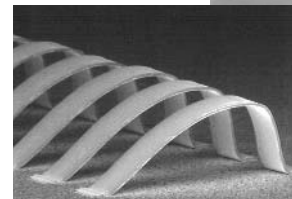
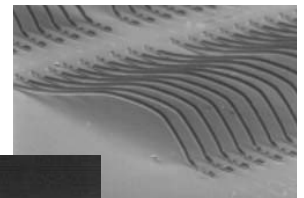
50 / 60Hz (selectable)

Power Consumption

2.5 KVA nominal

Air Consumption

1.5 CFM @ 65 psi, dry filtered to 0.3 µm



Dimensions

Manual Loading

889 mm (W) x 889 mm (D) x 2032 mm (H)
35" (W) x 35" (D) x 80" (H)

Magazine-to-Magazine

980 mm (W) x 965 mm (D) x 2032 mm (H)
39" (W) x 38" (D) x 80" (H)

Weight

600 Kg (1320 lbs.) estimated

For sales, service and manufacturing locations, visit:

www.kns.com

©2003 Kulicke & Soffa Industries Inc. Specifications may change without notice. The K&S logo and Kulicke & Soffa are trademarks of Kulicke & Soffa Investments, Inc.

Literature ID# MED-001/Revision 06/03

 **Kulicke & Soffa**